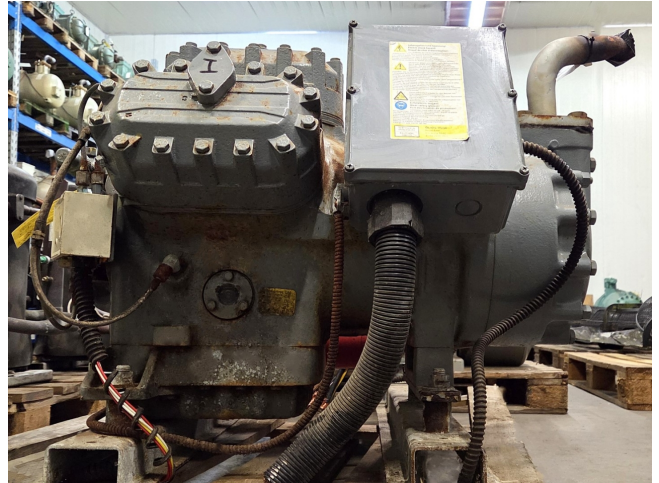


DWM D6DJ3-400X-AWM/D

Specifications

Marka	DWM
Typ	D6DJ3-400X-AWM/D
Czynnik chłodzący	Freon
kW at 0°C/+40°C	103,5
kW at -5°C/+40°C	86,5
kW at -10°C/+40°C	71,8
kW at -20°C/+40°C	48,0
kW at -30°C/+40°C	30,4
Ciśnieniowe przełączniki bezpieczeństwa	✓
Osuszający filter lini cieczy	✓
Okno widokowe	✓
m ³ / h	126,9
Uwagi	Y.o.b. 1998
Waga kg.	277
Rozmiary	850x600x560 mm (LxWxH)
Stock	2



Description

Used DWM D6DJ3-400X-AWM/D

Used DWM / Copeland D6DJ3-400X-AWM/D semi-hermetic reciprocating compressor on Freon complete with a Carly liquid line filter drier with a volume of 1,07 l, pressure safety switch and sight glass. The compressor has a displacement of 126,9 m³/h.

*Why choose for HOSBV? We are not only the largest used refrigeration specialist in Europe, but also, we deliver all equipment including an extensive test, warranty and an industrial cleaning. *Optionally we can also perform a new paint job and arrange the logistics.

